

**PUNTUKURNU ABORIGINAL MEDICAL SERVICE
BOARD OF DIRECTORS**

**CHIEF EXECUTIVE OFFICER
1.0 FTE**

*OFFICE OF THE CEO
Finance Manager
People & Culture Manager
Board Secretariat
Executive Assistant
Building Projects Manager
Senior Medical Officer*

**DIRECTOR OF CLINICAL
SERVICES
1.0 FTE**

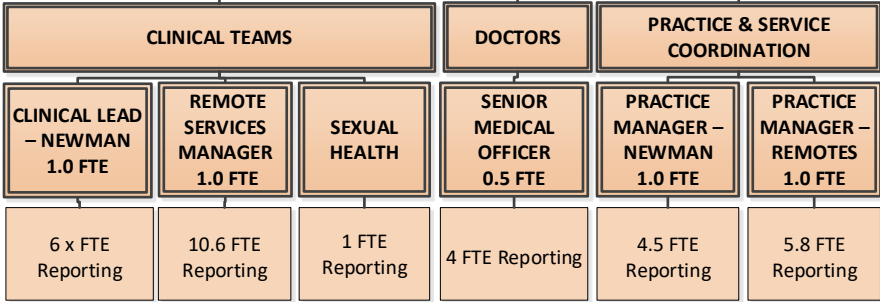
**DIRECTOR OF COMMUNITY
HEALTH
1.0 FTE**

**DIRECTOR OF CORPORATE
SERVICES
1.0 FTE**

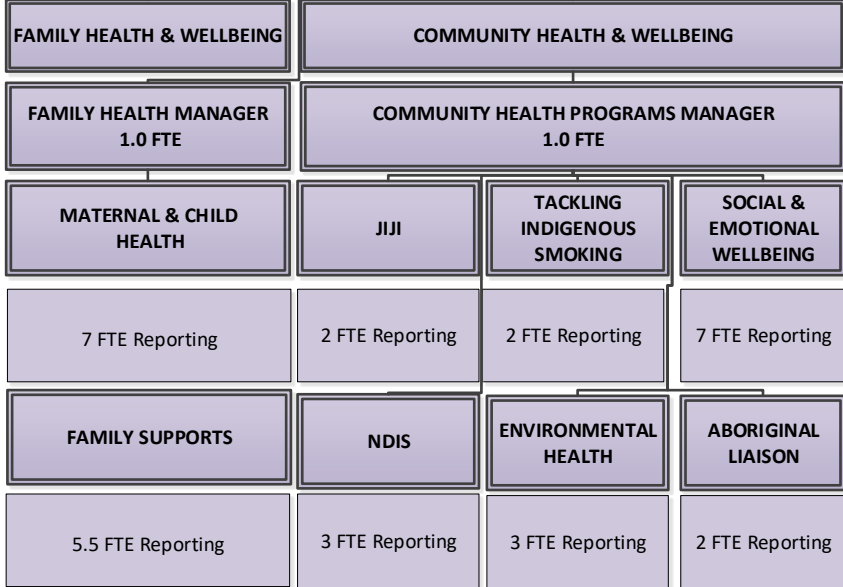
**PUNTUKURNU ABORIGINAL MEDICAL SERVICE
BOARD OF DIRECTORS**

**CHIEF EXECUTIVE OFFICER
1.0 FTE**

**DIRECTOR OF CLINICAL SERVICES
1.0 FTE**



**DIRECTOR OF COMMUNITY HEALTH
1.0 FTE**



**DIRECTOR OF CORPORATE SERVICES
1.0 FTE**

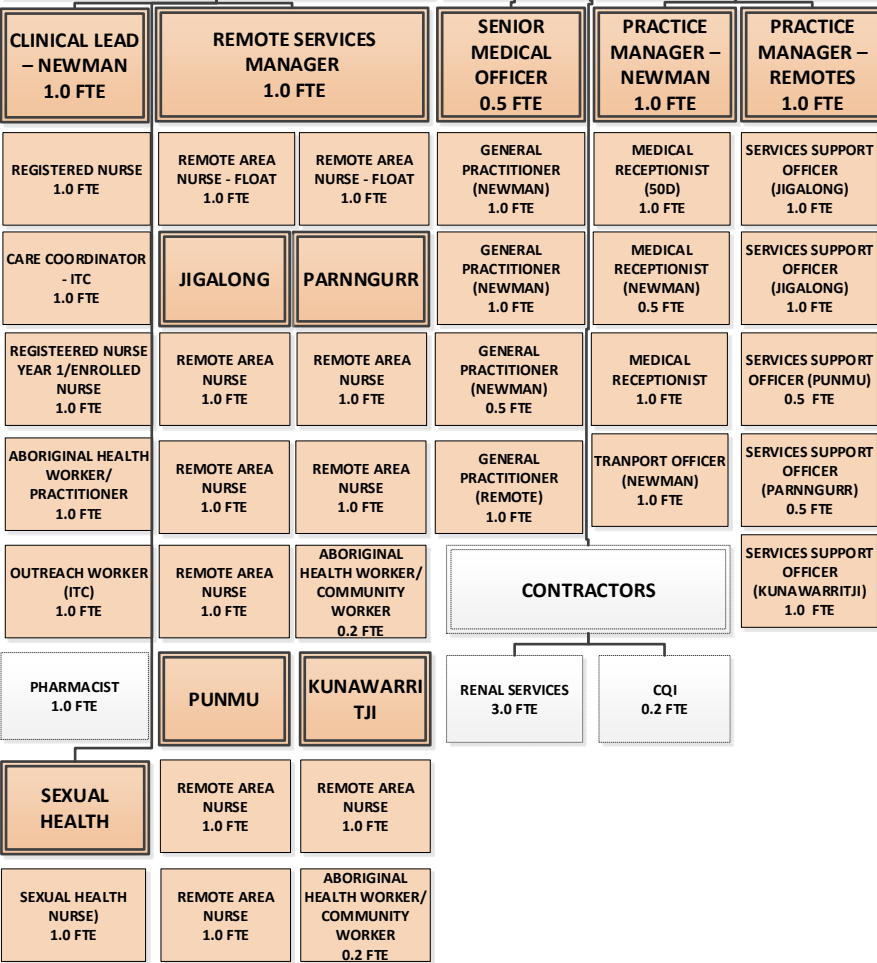


**PUNTUKURNU ABORIGINAL MEDICAL SERVICE
BOARD OF DIRECTORS**

**CHIEF EXECUTIVE OFFICER
1.0 FTE**

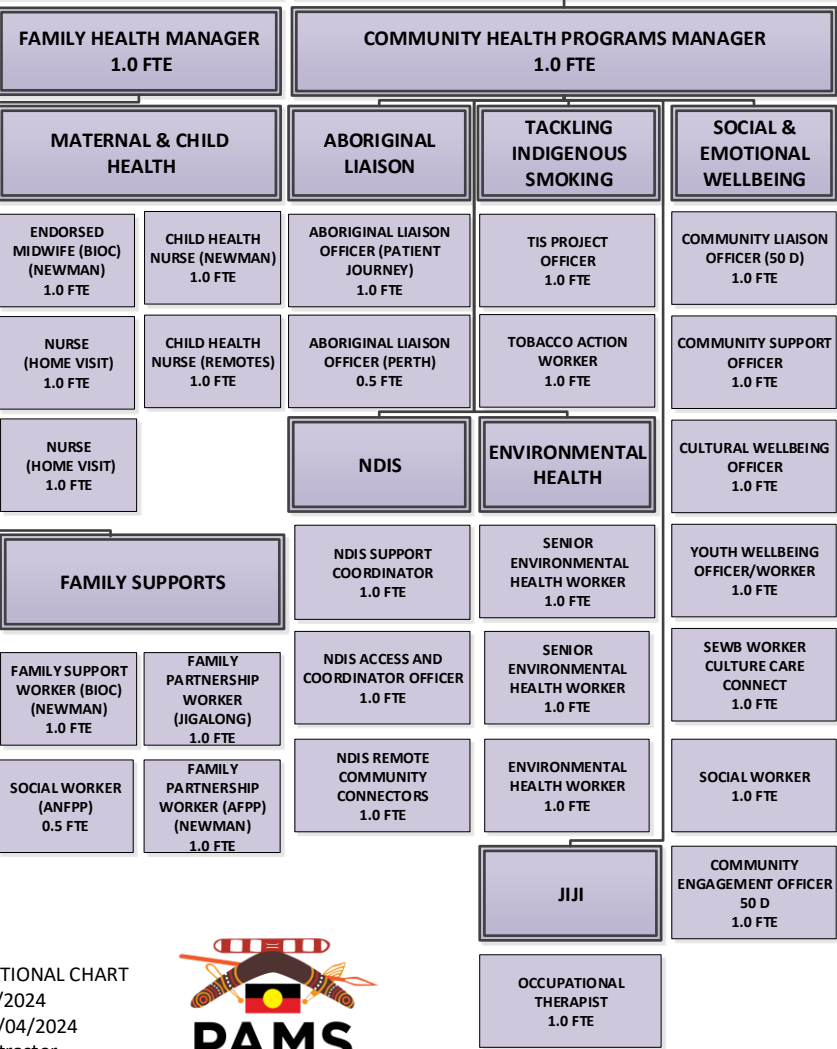
DIRECTOR OF CLINICAL SERVICES

CLINICAL TEAMS DOCTORS PRACTICE & SERVICE COORDINATION



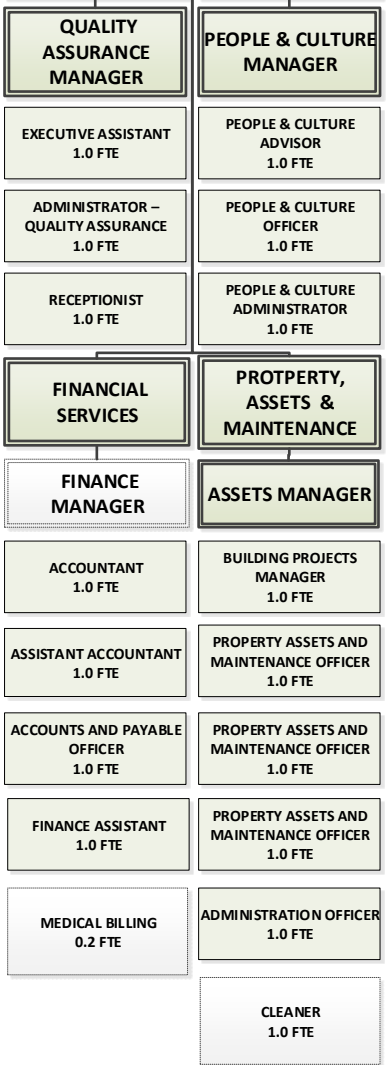
DIRECTOR OF COMMUNITY HEALTH

FAMILY HEALTH & WELLBEING COMMUNITY HEALTH & WELLBEING



DIRECTOR OF CORPORATE SERVICES

QUALITY ASSURANCE PEOPLE & CULTURE



DE-IDENTIFIED ORGANISATIONAL CHART
Updated: 05/04/2024
Board Endorsed: 09/04/2024
Blue Position Contractor
White Positions – External Consultants/Contractor



